

NOTES:

KEY:

- MAIN DEVELOPMENT SITE BOUNDARY
- CONSTRUCTION ZONE

NOT PROTECTIVELY MARKED

COPYRIGHT:
 Reproduced from Ordnance Survey map with the permission of Ordnance Survey on behalf of the controller of Her Majesty's Stationery Office © Crown copyright (2021). All Rights reserved. NNB GenCo Licence: 0100060408

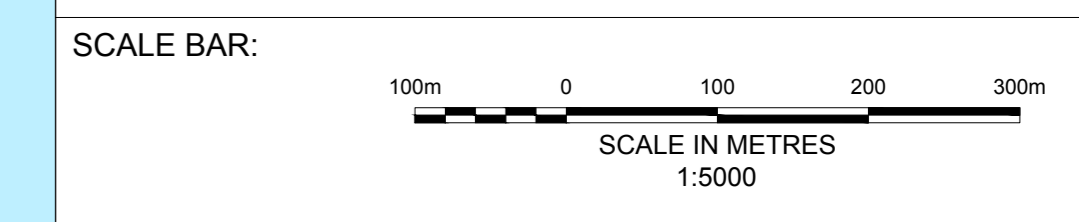


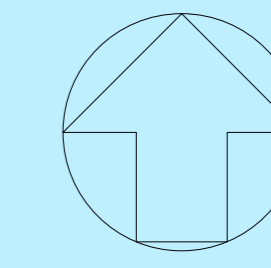
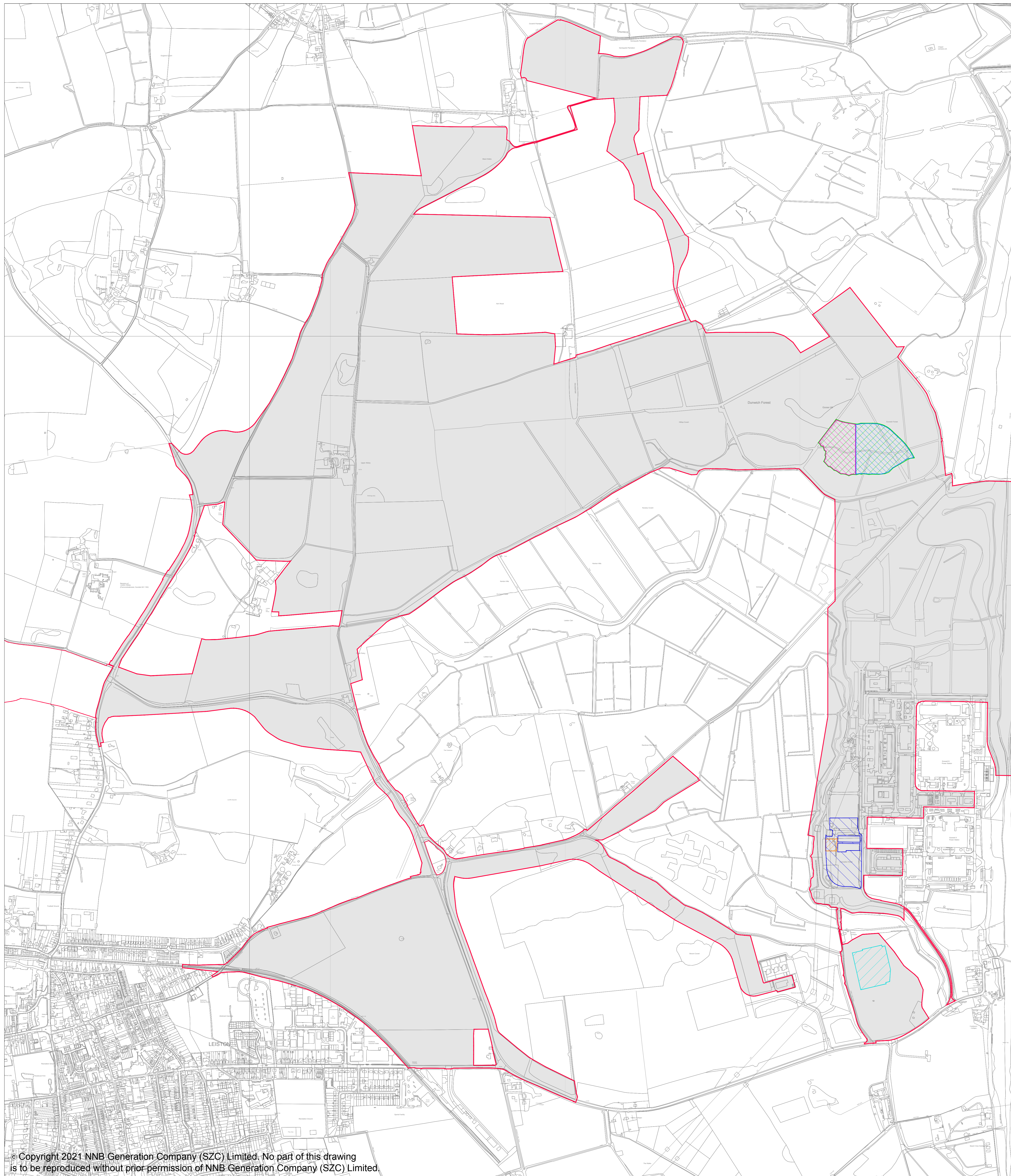
DOCUMENT:
 RESPONSE TO PINS PROCEDURAL DECISION 5 [DATED 22 JAN 2021]

DRAWING TITLE:
 ILLUSTRATIVE PLAN SETTING OUT INDICATIVE LOCATION OF CONSTRUCTION PARKING AREAS

DRAWING NO:
 SZ/CP/01

DATE: FEB 2021 DRAWN: SB SCALE: 1:5000@A0 REV: 01





NOTES:

KEY:

- MAIN DEVELOPMENT SITE BOUNDARY
- WORK No. 1A(r) - APPROXIMATELY 1370 PERMANENT CAR PARK SPACES
- OUTAGE CAR PARK APPROXIMATELY 600 SPACES
- OPERATIONAL CAR PARK APPROXIMATELY 600 SPACES
- WORK No. 1D(d) OPERATIONAL CAR PARK - UP TO 112 SPACES
- WORK No. 1E(d) OPERATIONAL CAR PARK - UP TO 579 SPACES
- WORK No. 1D(e) OUTAGE CAR PARK - UP TO 576 SPACES

NOT PROTECTIVELY MARKED

COPYRIGHT:
 Reproduced from Ordnance Survey map with the permission of Ordnance Survey on behalf of the controller of Her Majesty's Stationery Office © Crown copyright (2021).
 All Rights reserved. NNB GenCo Licence: 0100060408



DOCUMENT:
 RESPONSE TO PINS PROCEDURAL DECISION 5
 [DATED 22 JAN 2021]

DRAWING TITLE:
 ILLUSTRATIVE PLAN SETTING OUT INDICATIVE
 LOCATION OF OPERATIONAL PARKING AREAS

DRAWING NO:
 SZ/CP/02

DATE:	DRAWN:	SCALE:	REV:
FEB 2021	SB	1:5000@A0	01

